

Interactive Viewer

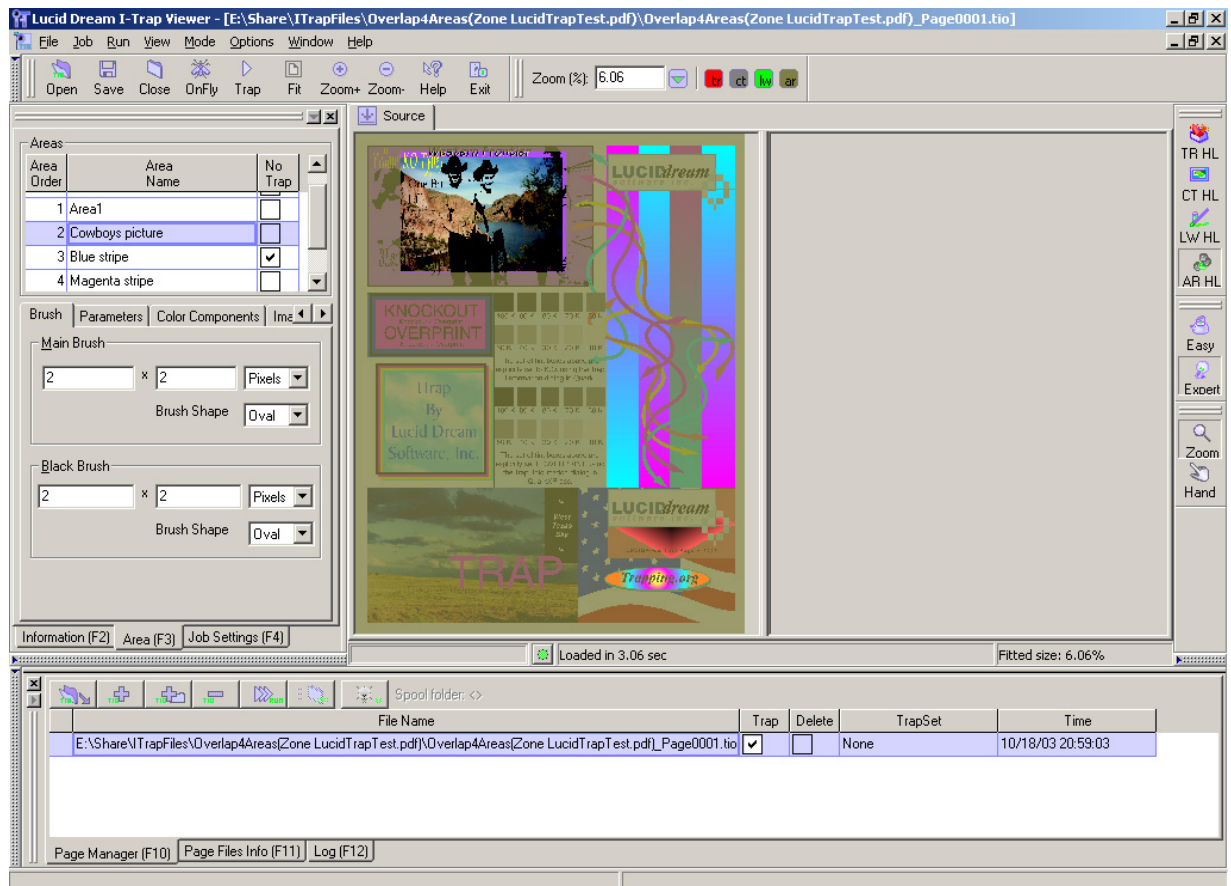
Sections of this Chapter describe in detail how to use these tools to achieve high quality trapping results.

Working with areas

Trapping parameters are defined individually not only for pages but for trap areas in a page as well. The parameters are combined in sets or collections related to zones present on the page.

The **Area tab** is a window where most trapping parameters can be edited. Its top box in expert mode displays a table of trap zones and its bottom box contains tabs to define trap brushes, ink-based parameters, and control image trapping as well as special options. In easy mode the top box shows the table of trap zones and the bottom box allows to set trap brushes and select TrapSets.

The **Area table box**, at the minimum, contains the page default area number zero. The ability to add other area definitions in the Viewer is under construction. The areas created in the authoring applications are listed in the table shown below, and their trapping parameters can be adjusted. See Appendix in the **Achieving High Quality Results** manual to learn how to use the Adobe Acrobat plug-in to create trap zones on a page.



All jobs have **Area 0** (zero) that is named “Page defaults” and represents basic page trap parameters. Area 0 is always shown and its name cannot be changed, however, the basic page trapping can be enabled or disabled using the **No Trap** checkbox.

Area Order lists areas from back most to front most. **Area Name** defaults to Area # but is user-editable. You can press the toolbar button **AR HL** to paint the outside of the current area with a selected highlight color. The */Options/Preferences.../Miscellaneous* tab lets you define the intensity of those highlight tints for inactive areas.

The **No Trap** checkbox turns off trapping for the specific area when it is checked. Right clicking on the table’s header for the **No Trap** column, enables or disables all the values in it.

Descriptive zone names and highlight colors are very helpful for tracking changes and viewing traps.

Remember that each trap zone can have a completely different set of trapping parameters in the settings tabs below the area table box.